



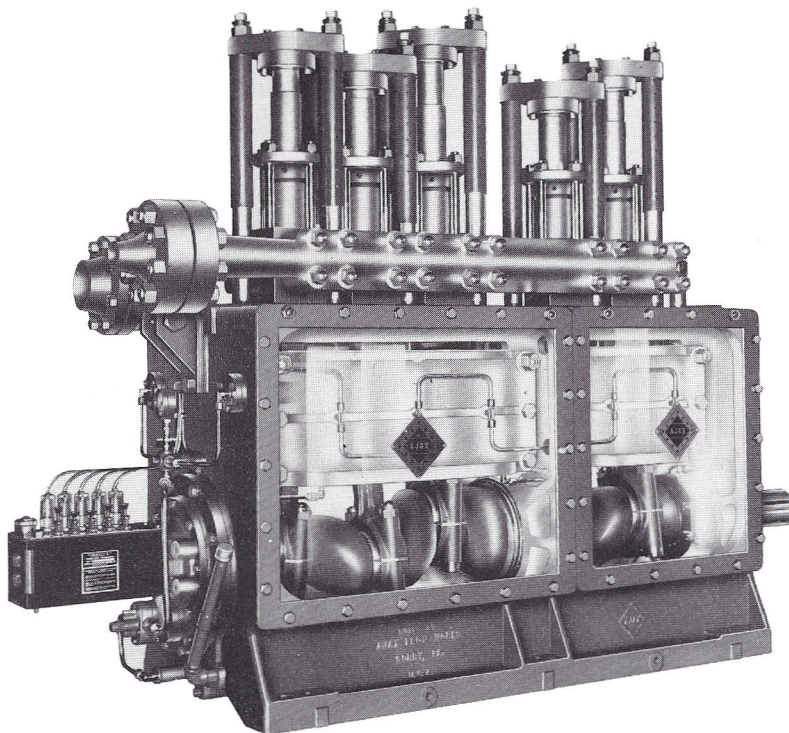
**GARDNER-DENVER**

# VERTICAL QUINTUPLEX PLUNGER PUMP

## Q-250

### 250 Horsepower—5" Stroke

BULLETIN 07-02-201  
2nd Edition



#### SPECIFICATIONS

Maximum BHP: 250  
Maximum RPM: 360  
No. of Plungers: 5  
Stroke Length: 5"  
Plunger Load: 9901 lbs. (4500 kg)  
Oil Capacity: 15 gal. (57 liters)  
Pump Weight: 7400 lbs. (3357 kg)  
Discharge

LP-2000  
Hydrostatic Test Pressure: MP-3900  
HP-7500

#### Connections:

LP: 8"—150#  
Suction: MP: 6"—150#  
HP: 4"—150#  
LP: 4"—900#  
Discharge: MP: 4"—1500#  
HP: 3"—2500#

#### Crankshaft Extension:

Diameter: 4<sup>3</sup>/<sub>4</sub>"  
Length: 12.0"  
Keyway (L x W x H): 11<sup>3</sup>/<sub>4</sub> x 1<sup>1</sup>/<sub>4</sub> x 1<sup>1</sup>/<sub>4</sub>

### SIZES AND RATINGS

Plunger Size		Maximum Pressure		Displacement per Revolution		Barrels Per Day, Gallons Per Minute at Pump Speed											
						100		150		200		250		300		360	
in.	mm	PSI	Kg/cm <sup>2</sup>	Gal.	Liters	BPD	GPM	BPD	GPM	BPD	GPM	BPD	GPM	BPD	GPM	BPD	GPM
<b>SMALL</b>																	
1½	38	5150	362	.191	.723	650	19	995	29	1305	38	1650	48	1955	57	2365	69
1⅝	41	4780	336	.224	.848	755	22	1165	34	1545	45	1920	56	2300	67	2765	81
1¾	44	4120	290	.260	.985	890	26	1340	39	1785	52	2230	65	2675	78	3210	94
1⅞	48	3585	252	.299	1.132	1030	30	1545	45	2060	60	2575	75	3090	90	3690	108
2	51	3155	222	.340	1.287	1165	34	1750	51	2335	68	2915	85	3500	102	4200	122
<b>MEDIUM</b>																	
2	51	3155	222	.340	1.287	1165	34	1750	51	2335	68	2915	85	3500	102	4200	122
2⅛	54	2785	196	.384	1.454	1305	38	1990	58	2710	79	3295	96	3945	115	4740	138
2¼	57	2490	175	.430	1.628	1475	43	2230	65	2950	86	3670	107	4425	129	5310	155
2⅜	60	2235	157	.479	1.813	1645	48	2470	72	3295	96	4120	120	4940	144	5915	173
2½	64	2015	142	.531	2.010	1820	53	2745	80	3635	106	4565	133	5455	159	6555	191
2⅝	67	1830	129	.586	2.218	2025	59	3020	88	4015	117	5010	146	6040	176	7235	211
2¾	70	1665	117	.643	2.434	2195	64	3295	96	4425	129	5525	161	6620	193	7940	231
<b>LARGE</b>																	
2¾	70	1665	117	.643	2.434	2195	64	3295	96	4425	129	5525	161	6620	193	7940	231
2⅞	73	1525	107	.703	2.661	2400	70	3600	105	4835	141	6040	176	7240	211	8680	253
3	76	1400	98	.765	2.896	2640	77	3945	115	5250	153	6555	191	7855	229	9445	275
3⅛	79	1290	91	.830	3.142	2850	83	4290	125	5695	166	7100	207	8540	249	10245	299
3¼	83	1195	84	.898	3.399	3085	90	4630	135	6175	180	7685	224	9230	269	11085	323
3⅝	86	1105	78	.968	3.664	3330	97	4975	145	6655	194	8300	242	9950	290	11950	349
3½	89	1030	72	1.041	3.941	3570	104	5350	156	7135	208	8920	260	10705	312	12850	375

Based on 90% mechanical efficiency and 100% volumetric efficiency.

Specifications subject to change without notice.